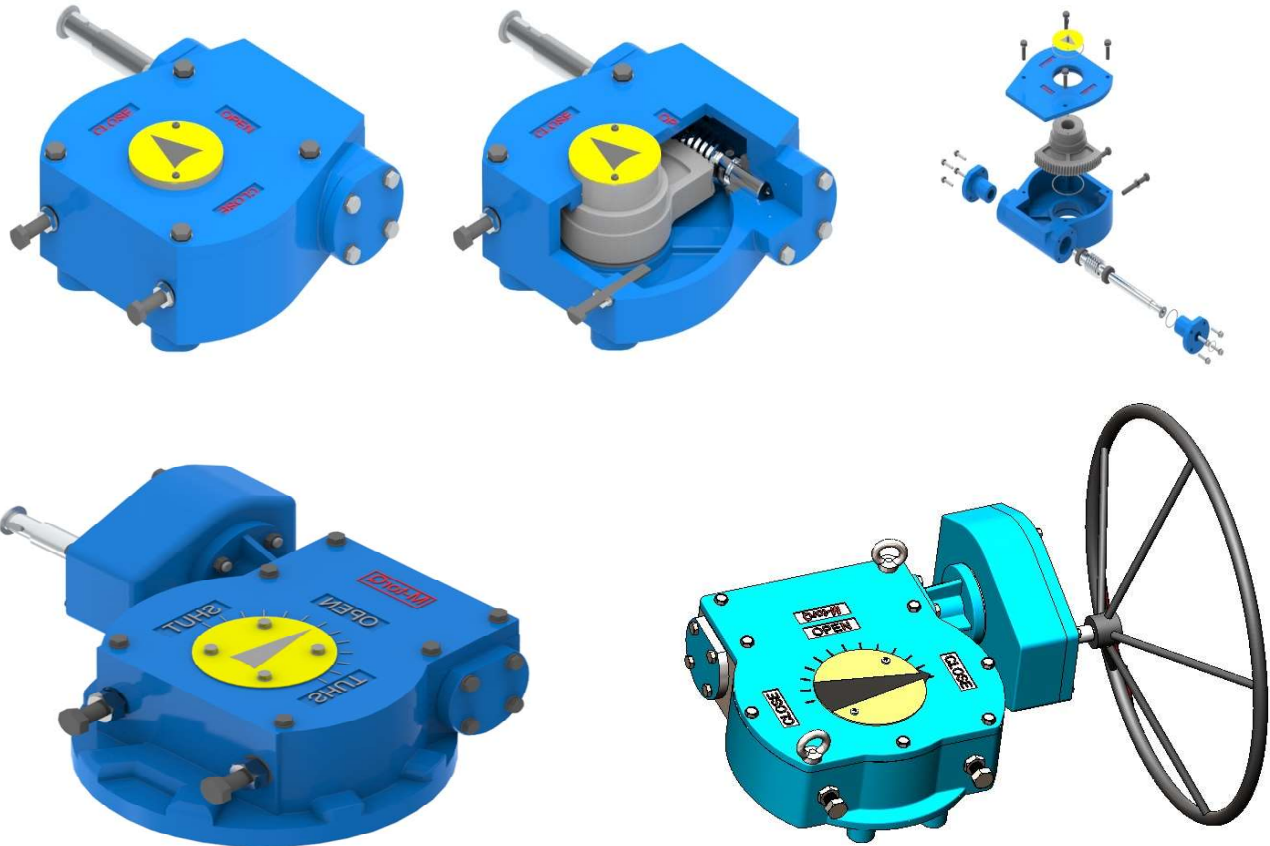


MTGAT Quarter-turn Worm Gear Box Series

MTGAT Series-



Standard Features

- Lean design whilst optimizing robustness and strength
- Mounting base as per ISO 5211
- Grease filled for life
- Fully sealed gearbox and completely enclosed gearing
- Cast iron casing and ductile iron quadrant
- Stroke 0-90° (+5° adjustable) and zinc plated fasteners
- High performance axial bearings
- Epoxy primer coating is standard for gearbox
- Powder coated hand wheels for smooth and easy operation on request

Options

- Housing material options (ductile iron/stainless steel)
- Worm shaft, fasteners and hand wheel material option available in stainless steel
- High temperature variant up to +180°C (+364°F) & low temperature variant up to -40°C available
- For Marine application (all shafts and fasteners in stainless steel)
- For Padlock arrangement available.
- Namur mounting available for limit switch box fitment.
- Finish painting is available on request.

Optional Futures

- Twin-shaft version available for some models of MTGAT series to reduce number of turns to close for manual operation.
- Part turn 180° operated gearbox option available up to 15000 Nm
- From top side mounting ("hand wheel, chain wheel or electric actuator" to be mounted or operated from the top of the gearbox and not from the side)
- Stainless steel version of gearboxes available for applications in highly corrosive environments for food and beverage, pharmaceutical and sanitary facilities.
- Finish painting is available on request

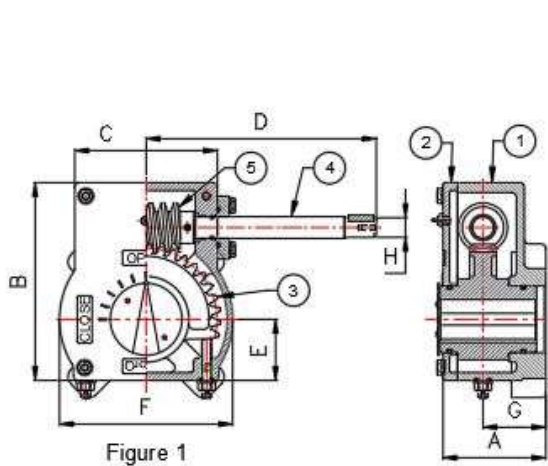


Figure 1

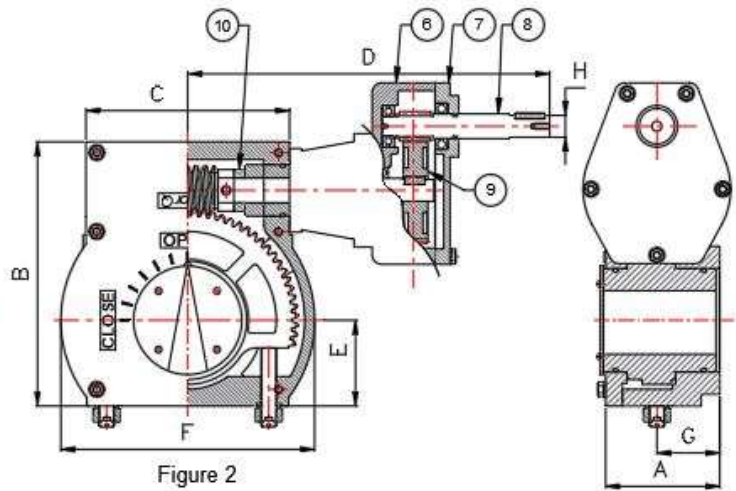
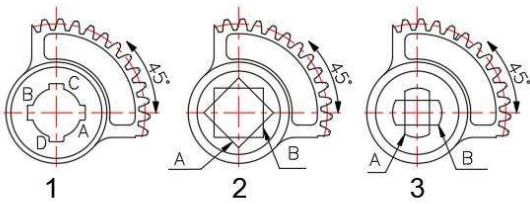


Figure 2



View from Top MTGAT Close Position

Note:

Figure 1 for Models up to MTG AT-90

Figure 2 for Models above MTG AT-90

Sr.No.	Description	Material	IS Standard	ASTM Standard
1	Housing	Cast Iron	IS210 FG200	ASTM A53660
2	Top Cover	Cast Iron	IS210 FG200	ASTM A53660
3	Worm Wheel	Ductile Iron	SGI 500/7	A536 80-55-06
4	Input Shaft	Carbon Steel	En8	
5	Worm	Carbon Steel	En8	
6	Spur Housing	Cast Iron	IS210 FG200	ASTM S4835B/40B
7	Spur Cover	Cast Iron	IS210 FG200	ASTM S4835B/40B
8	Spur Pinion	Carbon Steel	En8	
9	Spur Gear	Ductile Iron	SGI 500/7	SAE4140
10	Thrust Bearing	STD	-	-

Model	Output Torque (Nm)	Mech. Advantage $\pm 10\%$	Ratio	Turns To Close	ISO 5211 Mounting	Max Drive Bore	Approx. Unit Weight (Kg)	Recommended HW	Gear Operator Dimensions							
									A	B	C	D	E	F	G	H
MTGAT 5	150	8	20:1	7	F05, F07	14	1.5	$\emptyset 150$	52	108	76	109	38	93.5	28	10
MTGAT 10	200	8	24:1	8	F05, F07	25	1.5	$\emptyset 150$	57	133	90	155	55	106	28	14
MTGAT 20	250	8	34:1	9	F05, F07	26	2	$\emptyset 175$	57	133	90	161	55	106	28	12
MTGAT 25	500	10	40:1	10	F07, F10	26	5	$\emptyset 250$	63	131	100	175	45	106	31.5	14
MTGAT 30	700	10	40:1	10	F07, F10, F12	32	6	$\emptyset 350$	97	180	132	206	65	145	59.5	18
MTGAT 40	1000	11	44:1	11	F10, F12, F14	35	11	$\emptyset 350$	97	180	132	206	65	145	59.5	18
MTGAT 50	1500	12	48:1	12	F10, F12, F14, F16	42	12	$\emptyset 500$	84	202	138	230.5	84	162	47	18
MTGAT 60	2000	15	60:1	15	F10, F12, F14, F16	50	15	$\emptyset 550$	86	214	156	242	83	176	46	20
MTGAT 65	2500	16	60:1	17	F12, F14, F16	55	22	$\emptyset 550$	128	252	200	247	86	244	69	22
MTGAT 70	3500	18	70:1	19	F14, F16	70	36	$\emptyset 650$	119	268	207	250	87	258	64	22
					, F25	37	300									
MTGAT 80	3000	22	80:1	20	F12, F14, F16	55	33	$\emptyset 550$	128	252	200	247	86	244	69	22
					F25	55	36							300		
MTGAT 90	4000	23	90:1	22	F16, F25	85	64	$\emptyset 650$	131	315	273	249	100	345	76	20
MTGAT 80/1/S1	4500	50	260:1	66	F12, F14, F16	55	37	$\emptyset 550$	128	252	200	247	86	244	69	22
					F25	55	41							304		
MTGAT 85/1/S1	5500	60	280:1	70	F14, F16	55	41	$\emptyset 650$	119	268	207	250	87	258	64	22
					F25	55	41							300		
MTGAT 70/3/S1	6500	65	290:1	73	F14, F16	70	42	$\emptyset 650$	119	268	207	250	87	258	64	22
					F25	70	50							300		
MTGAT 90/1/S1	8000	70	300:1	75	F16, F25	75	70	$\emptyset 650$	133	315	274	398	100	345	78	22
MTGAT 100/1/S1	10000	75	300:1	75	F25, F30	85	72	$\emptyset 650$	153	335	274	401	100	365	81	22
MTGAT 150/1/S2	15000	100	450:1	112	F25, F30	85	86	$\emptyset 650$	153	335	274	419	100	365	81	22
MTGAT 250/2/S2	22500	120	450:1	114	F25, F30, F35	110	142	$\emptyset 650$	157	424	334	430	133	469	88	20
MTGAT 300/2/S3	28000	210	900:1	225	F25, F30, F35	150	140	$\emptyset 750$	157	424	334	471	133	469	88	20
MTGAT 350/2/S3	35000	253	1110:1	287	F25, F30, F35	150	165	$\emptyset 750$	157	424	334	471	133	469	88	20
MTGAT 450/1/S3	45000	270	1170:1	293	F30, F35, F40	150	295	$\emptyset 750$	200	533	425	515	162	592	100	20
MTGAT 500/1/S3	50000	287	1260:1	325	F30, F35, F40	150	385	$\emptyset 750$	203	650	595	599	199	710	105	20
MTGAT 600/1/S3	60000	340	1540:1	386	F30, F35, F40	150	430	$\emptyset 750$	203	650	595	654	199	710	105	25
MTGAT 750/1/S4	75000	400	1820:1	447	F40, F48	200	435	$\emptyset 750$	203	650	595	658	199	710	105	25
MTGAT 1000/1/S4	100000	600	2630:1	656	F40, F48	200	455	$\emptyset 750$	203	650	595	658	199	710	103	25
MTGAT 1500/1/S5	150000	860	4220:1	1056	F40, F48	250	1025	$\emptyset 950$	313	890	729	789	276	960	170	30
MTGAT 2000/1/S5	200000	1210	5490:1	1374	F40, F48	250	1210	$\emptyset 950$	313	890	729	789	276	960	170	30
MTGAT 2500/1/S6	250000	1630	7140:1	1860	F48, F60	260	1805	$\emptyset 950$	385	1154	1006	963	350	1292	175	30
MTGAT 3000/1/S6	300000	2045	9230:1	2325	F48, F60	260	2000	$\emptyset 950$	385	1154	1006	963	350	1292	175	25
MTGAT 3500/1/S6	350000	2482	11184:1	2821	F48, F60	260	2200	$\emptyset 1050$	385	1154	1006	963	350	1292	175	35



CERTIFICATE

Management system as per
ISO 9001 : 2015

The Certification Body TÜV INDIA hereby confirms as a result of the audit, assessment and certification decision according to ISO/IEC 17021-1:2015, that the organization

M TORQ CONTROLS INDIA
Plot No. B-3-E10-19(3), Pimpri Industrial Area,
Village Bhosari, MIDC, Pune - 411 026
Maharashtra,
India



operates a management system in accordance with the requirements of ISO 9001:2015 and will be assessed for conformity within the 3 year term of validity of the certificate.

Scope -

Design, Manufacture and Supply of Limit Switch, Gear Box & Actuator

Certificate Registration No. **QM 03 02834**
Audit Report No. **Q 10869/2021**

Valid from **10.07.2021**
Valid until **09.07.2024**

Certification Body
at TÜV INDIA PVT. LTD.

Mumbai, **10.07.2021**

TUV India Pvt. Ltd., 801, Raheja Plaza - 1, L.B.S. Marg, Ghatkopar (W), Mumbai - 400 086, India cert.helpdesk@tuvindia.co.in



Distributor's address:



Contact us at - Mfg-B3, 10, 19(E) General
Block, MIDC, Near Patheja Forging, Bhosari
Pune -411026 Maharashtra India

Email - sales@mtroqindia.com,
mtroqindia@gmail.com.
Phone: - +91 20 27400988,89

